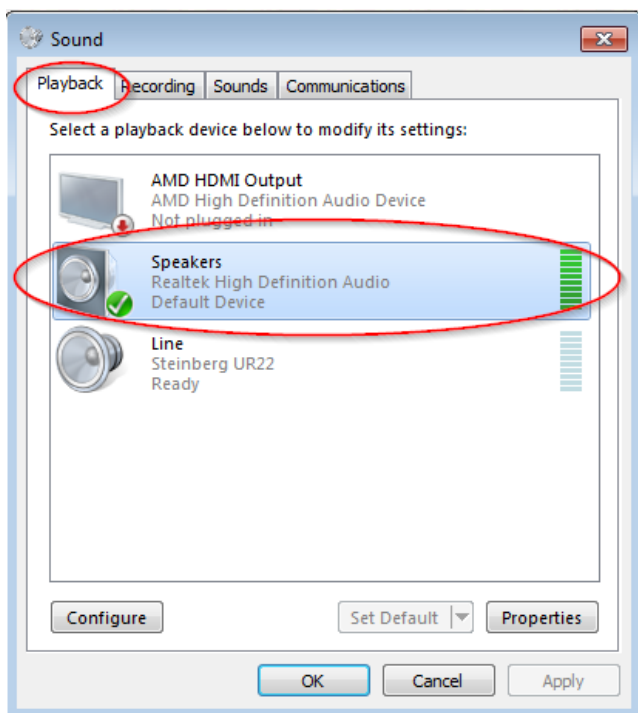
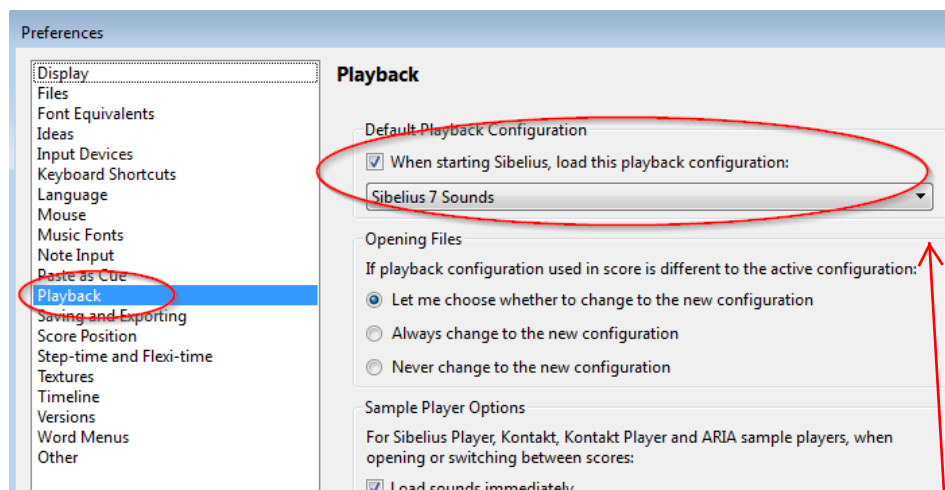
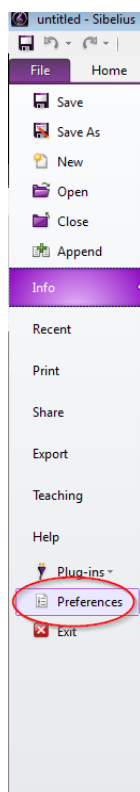


No Sound Using Sibelius?

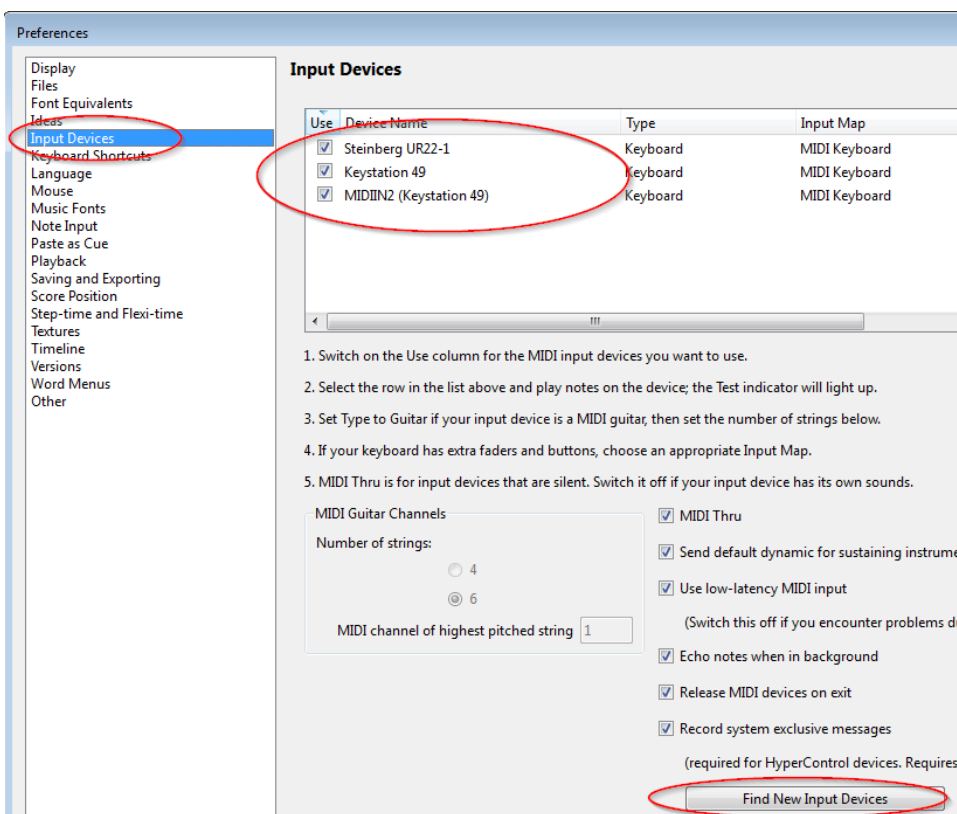
1. Check the output device in Windows.
Control Panel > Sound > Playback
Select Realtek Audio as Default Device



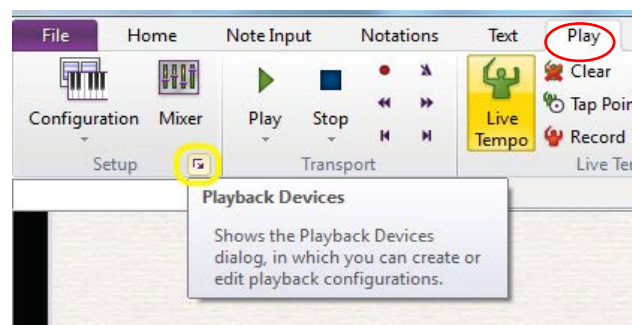
2. In Sibelius, **File > Preferences**



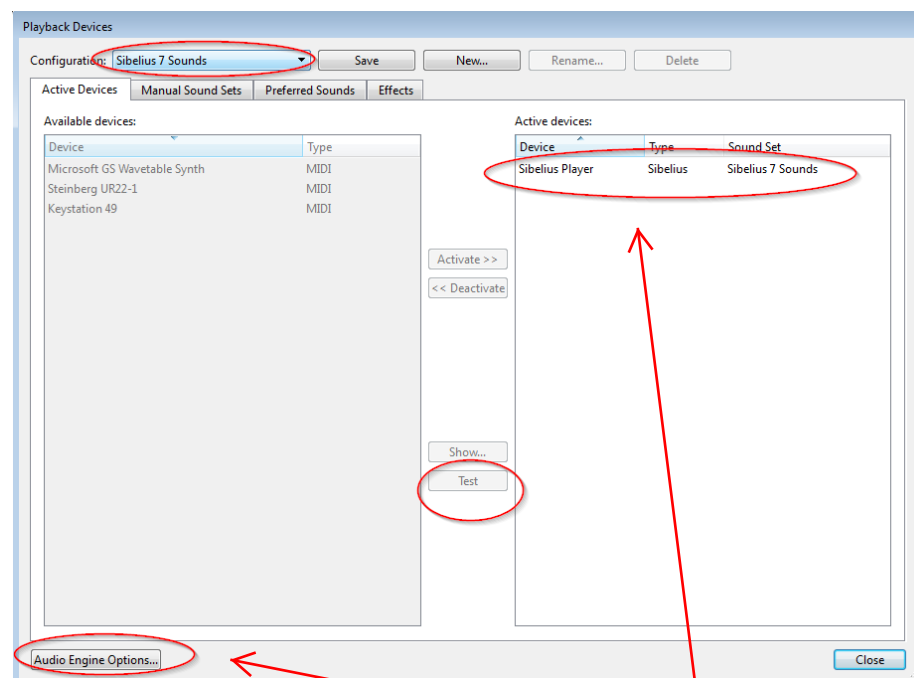
3. **Preferences > Playback > Default Playback Configuration.** Check **When Starting Sibelius,..** Select **Sibelius 7 Sounds.** As above.



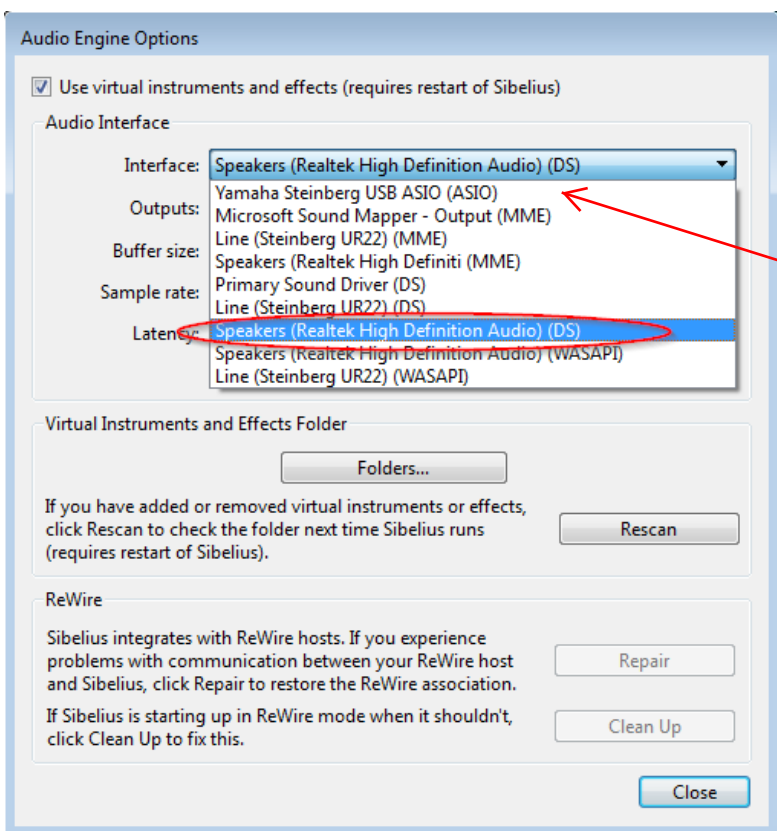
4. **Preferences > Input Devices.** Select **Find New Input Devices.** You should see the keyboard in the list. Otherwise, check the USB cable to the keyboard. **OK**



5. **Play > Click the small arrow under Mixer.**



6. In **Playback Devices**, select **Audio Engine Options**



Make sure Yamaha Steinberg is **not** selected.
Try any Realtek Audio Interface.

7. Select **Speakers (Realtek High Definition Audio Device)(DS).**
Close

8. **Playback Devices > Active devices.** Select **Sibelius Player.** Select **Test.** You should hear sound from the computer speaker.
Close